



# Massaranduba Structural Panel



**Dimensions:** 23.875" x 23.875" x 1.69"

**Email:** [support@coverdeck.com](mailto:support@coverdeck.com)

**Tile Weight:** 24 lbs.

**Website:** [www.coverdeck.com](http://www.coverdeck.com)



The mark of responsible forestry

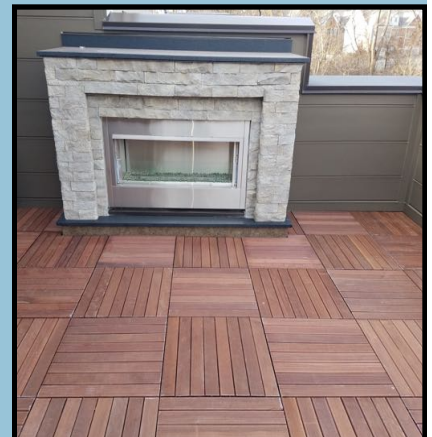
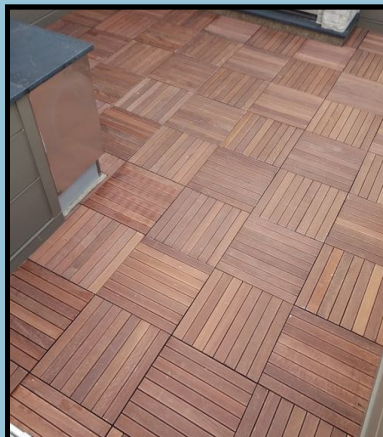
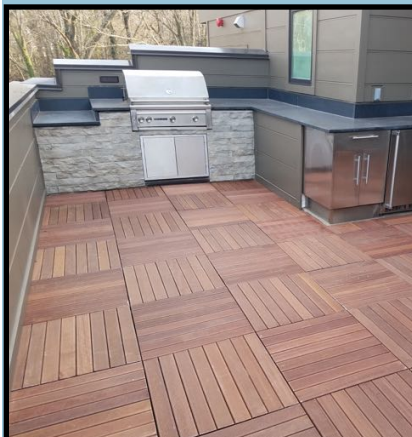
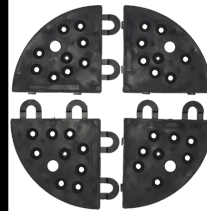
Ask us about availability of FSC® products.

**(800) 550-3325**

## SNAPJACK

### Elevated Interlocking Corner Connectors

The most innovative and one of a kind solutions for connecting **Deckstone Porcelain Structural Panels** over roof decks, concrete balconies, existing wood decks, patios and a multitude of other surfaces.





# Massaranduba Structural Panel

**Massaranduba** is considered one of the best hardwood flooring options because of its attractive look and durability. Along with those qualities it's ability to avoid decay makes it a great choice for most exterior applications while still maintaining the look of an interior hardwood floor.

**Massaranduba** can also go by the name of Brazilian Redwood and comes in shades of light to darkish red. The 24" Structural Panels have a fluted finish and will certainly add beauty and warmth to your outdoor space.

## Specifications:

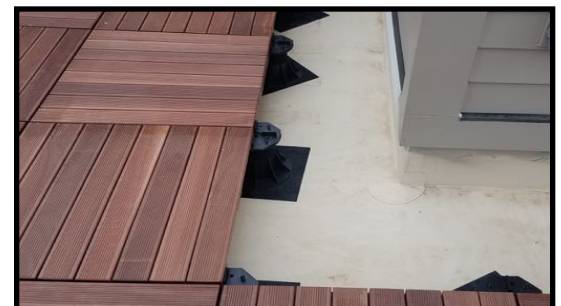
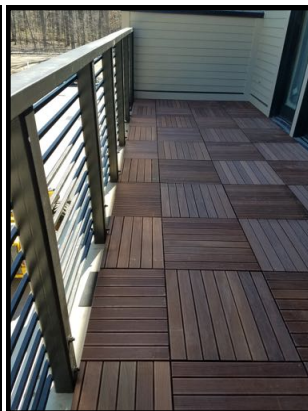
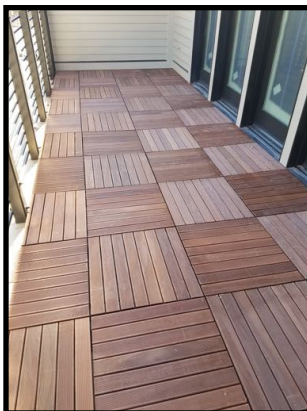
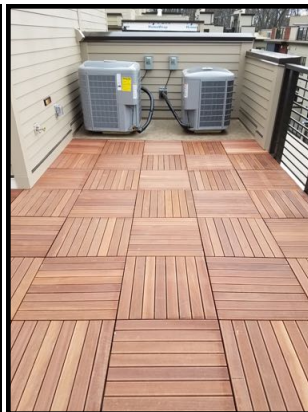
- Color: Redish Brown
- Surface: Fluted
- Fire Rating: Class A
- Janka Hardness Rating: 3,190 lbs.

## Applications:

- Patios
- Decks
- Balconies
- Special Occasions

## Features:

- Does Not Require Sealer
- Low Maintenance
- Attractive Color
- Hard Surface
- Covers Most Outdoor Surfaces



Structural Panels with Pedestal System & Protection Mat

